

## World on the Edge - Supporting Data for Chapter 11

### [World Population, 1950-2008](#)

GRAPH: World Population, 1950-2008

### [World Population, 1950-2008, with Projections to 2050](#)

GRAPH: World Population, 1950-2008, with Projections to 2050

### [Populations of United States and Pakistan, 1950-2008](#)

GRAPH: Population of United States and Pakistan, 1950-2008

### [Life Expectancy for the World and Selected Groups and Regions, 1950-2005, with Projection to 2050](#)

GRAPH: Life Expectancy for the World, 1950-2005, with Projection to 2050

GRAPH: Life Expectancy for Africa, 1950-2005, with Projection to 2050

GRAPH: Life Expectancy for Sub-Saharan Africa, 1950-2005, with Projection to 2050

GRAPH: Life Expectancy for Asia, 1950-2005, with Projection to 2050

GRAPH: Life Expectancy for Top 20 Failing States, 1950-2005, with Projection to 2050

### [Gross Domestic Product Based on Purchasing Power Parity for China, India, and Brazil, 1980-2009](#)

GRAPH: Gross Domestic Product for China, India, and Brazil, 1980-2009

### [Per Capita Gross Domestic Product Based on Purchasing Power Parity for China, India, and Brazil, 1980-2009](#)

GRAPH: Per Capita Gross Domestic Product for China, India, and Brazil, 1980-2009

### [Official Development Assistance from Development Assistance Committee Members, 1960-2009](#)

GRAPH: Official Development Assistance from Development Assistance Committee Members, 1960-2009

### [Official Development Assistance from the United States, 1960-2009](#)

GRAPH: Official Development Assistance from the United States 1960-2009

### [Education and Total Fertility Rates for Top and Bottom Countries Sorted by Primary School Enrollment](#)

### [Female Education, Literacy, and Total Fertility Rates, Latest Year](#)

GRAPH: Female Secondary Education and Total Fertility Rates

### [Plan B Budget: Additional Annual Funding Needed to Reach Basic Social Goals](#)

A full listing of data for the entire book is on-line at:

[http://www.earth-policy.org/books/wote/wote\\_data](http://www.earth-policy.org/books/wote/wote_data)

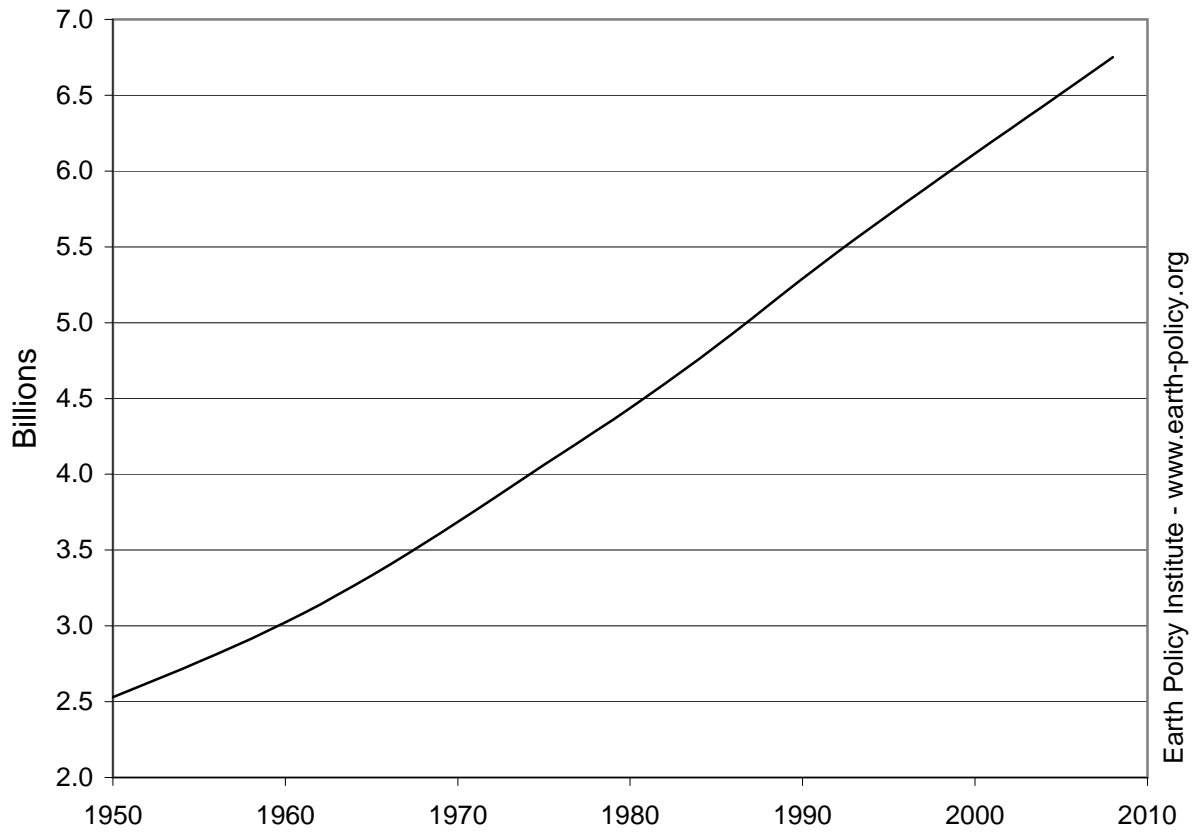
This is part of a supporting dataset for Lester R. Brown, **World on the Edge: How to Prevent Environmental and Economic Collapse** (New York: W.W. Norton & Company, 2011). For more information and a free download of the book, see Earth Policy Institute on-line at [www.earth-policy.org](http://www.earth-policy.org).

## World Population, 1950-2008

Year	Population Billions
1950	2.53
1951	2.58
1952	2.62
1953	2.67
1954	2.72
1955	2.76
1956	2.81
1957	2.86
1958	2.91
1959	2.97
1960	3.02
1961	3.08
1962	3.14
1963	3.20
1964	3.27
1965	3.33
1966	3.40
1967	3.47
1968	3.54
1969	3.61
1970	3.69
1971	3.76
1972	3.84
1973	3.91
1974	3.99
1975	4.06
1976	4.14
1977	4.21
1978	4.29
1979	4.36
1980	4.44
1981	4.52
1982	4.60
1983	4.68
1984	4.76
1985	4.85
1986	4.93
1987	5.02
1988	5.11
1989	5.20
1990	5.29
1991	5.38
1992	5.46
1993	5.55
1994	5.63
1995	5.71
1996	5.79
1997	5.88
1998	5.96
1999	6.04
2000	6.12
2001	6.19
2002	6.27
2003	6.35
2004	6.43
2005	6.51
2006	6.59
2007	6.67
2008	6.75

Source: United Nations Population Division, *World Population Prospects: The 2008 Revision Population Database*, electronic database, at <http://esa.un.org/unpp>, updated 11 March 2009.

# World Population, 1950-2008



Source: UNPop

Earth Policy Institute - [www.earth-policy.org](http://www.earth-policy.org)

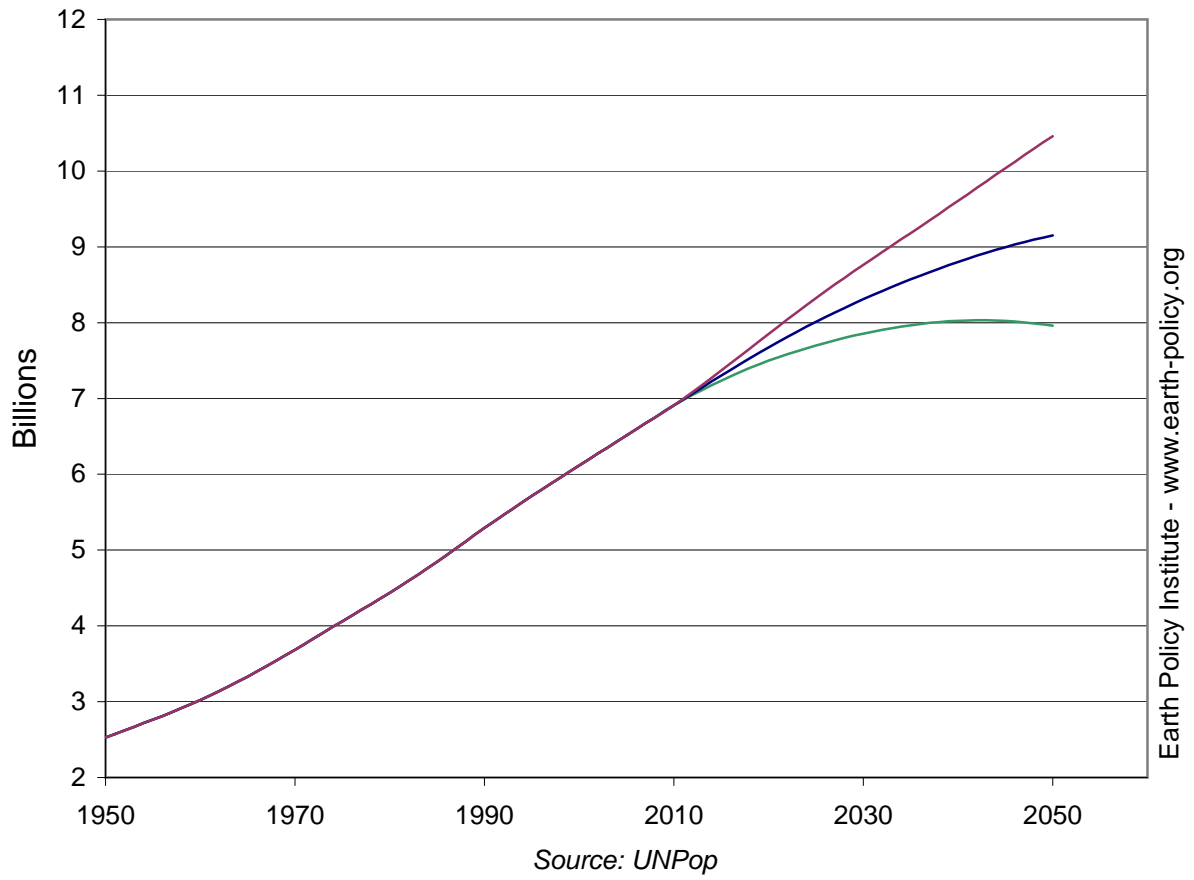
## World Population, 1950-2008, with Projections to 2050

Year	Population Billions	Population Projections			
		Year	Low	Medium	High
1950	2.5	2009	6.8	6.8	6.8
1951	2.6	2010	6.9	6.9	6.9
1952	2.6	2011	7.0	7.0	7.0
1953	2.7	2012	7.0	7.1	7.1
1954	2.7	2013	7.1	7.1	7.2
1955	2.8	2014	7.2	7.2	7.3
1956	2.8	2015	7.2	7.3	7.4
1957	2.9	2016	7.3	7.4	7.5
1958	2.9	2017	7.3	7.5	7.6
1959	3.0	2018	7.4	7.5	7.7
1960	3.0	2019	7.5	7.6	7.8
1961	3.1	2020	7.5	7.7	7.9
1962	3.1	2021	7.5	7.7	7.9
1963	3.2	2022	7.6	7.8	8.0
1964	3.3	2023	7.6	7.9	8.1
1965	3.3	2024	7.7	7.9	8.2
1966	3.4	2025	7.7	8.0	8.3
1967	3.5	2026	7.7	8.1	8.4
1968	3.5	2027	7.8	8.1	8.5
1969	3.6	2028	7.8	8.2	8.6
1970	3.7	2029	7.8	8.3	8.7
1971	3.8	2030	7.9	8.3	8.8
1972	3.8	2031	7.9	8.4	8.8
1973	3.9	2032	7.9	8.4	8.9
1974	4.0	2033	7.9	8.5	9.0
1975	4.1	2034	7.9	8.5	9.1
1976	4.1	2035	8.0	8.6	9.2
1977	4.2	2036	8.0	8.6	9.3
1978	4.3	2037	8.0	8.7	9.4
1979	4.4	2038	8.0	8.7	9.4
1980	4.4	2039	8.0	8.8	9.5
1981	4.5	2040	8.0	8.8	9.6
1982	4.6	2041	8.0	8.8	9.7
1983	4.7	2042	8.0	8.9	9.8
1984	4.8	2043	8.0	8.9	9.9
1985	4.8	2044	8.0	9.0	10.0
1986	4.9	2045	8.0	9.0	10.0
1987	5.0	2046	8.0	9.0	10.1
1988	5.1	2047	8.0	9.1	10.2
1989	5.2	2048	8.0	9.1	10.3
1990	5.3	2049	8.0	9.1	10.4
1991	5.4	2050	8.0	9.1	10.5
1992	5.5				
1993	5.5				
1994	5.6				
1995	5.7				
1996	5.8				
1997	5.9				
1998	6.0				
1999	6.0				
2000	6.1				
2001	6.2				
2002	6.3				
2003	6.4				
2004	6.4				
2005	6.5				
2006	6.6				
2007	6.7				
2008	6.8				

Source: United Nations Population Division, *World Population Prospects: The 2008 Revision Population Database*, electronic database, at [esa.un.org/unpp](http://esa.un.org/unpp), updated 11 March 2009.

This is part of a supporting dataset for Lester R. Brown, **World on the Edge: How to Prevent Environmental and Economic Collapse** (New York: W.W. Norton & Company, 2011). For more information and a free download of the book, see Earth Policy Institute on-line at [www.earth-policy.org](http://www.earth-policy.org).

# World Population, 1950-2008, with Projections to 2050

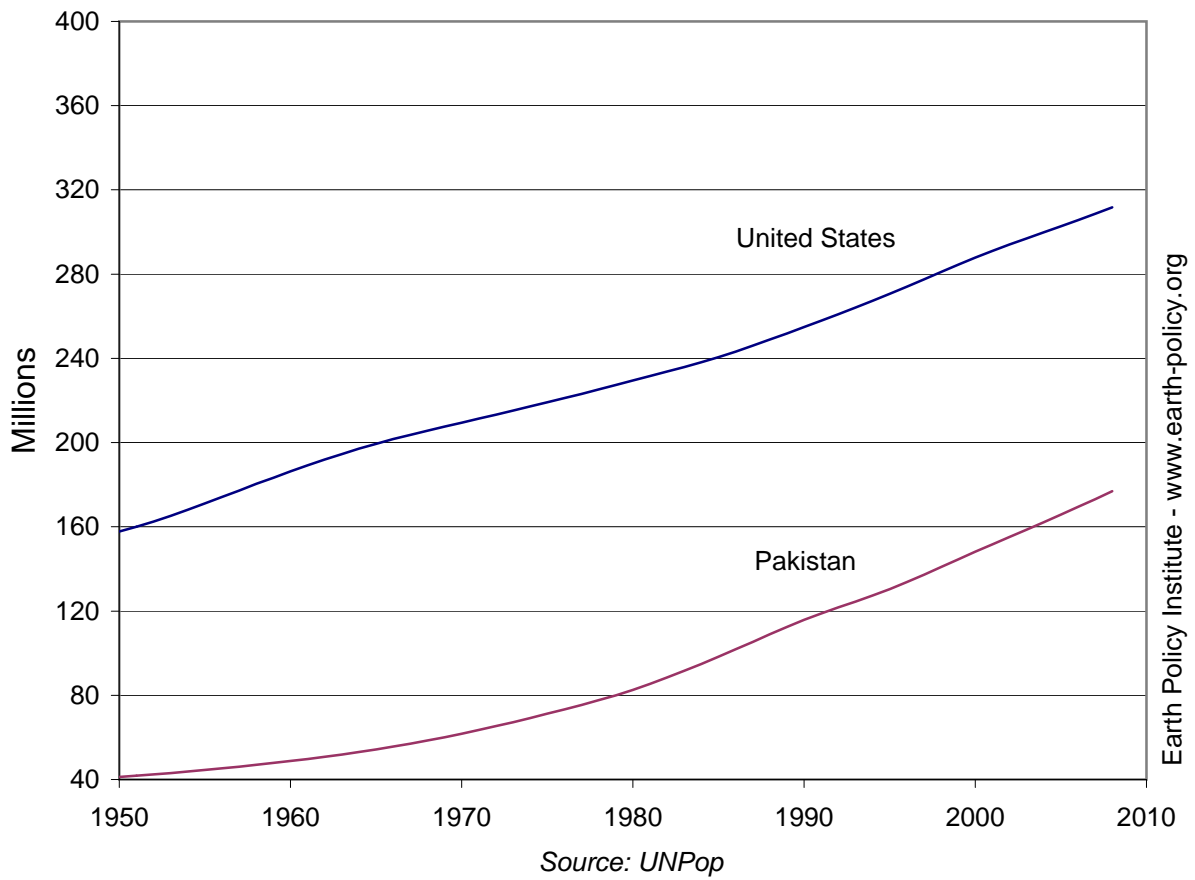


### Populations of United States and Pakistan, 1950-2008

Year	United States	Pakistan
	Millions	
1950	157.8	41.2
1951	160.0	41.8
1952	162.5	42.4
1953	165.3	43.1
1954	168.2	43.8
1955	171.2	44.5
1956	174.2	45.3
1957	177.3	46.1
1958	180.4	46.9
1959	183.4	47.8
1960	186.3	48.8
1961	189.2	49.8
1962	192.0	50.8
1963	194.6	51.9
1964	197.1	53.0
1965	199.5	54.3
1966	201.7	55.6
1967	203.7	57.0
1968	205.7	58.5
1969	207.6	60.1
1970	209.5	61.8
1971	211.4	63.5
1972	213.3	65.3
1973	215.2	67.2
1974	217.1	69.2
1975	219.1	71.2
1976	221.1	73.3
1977	223.2	75.4
1978	225.3	77.6
1979	227.4	80.0
1980	229.5	82.6
1981	231.6	85.4
1982	233.7	88.4
1983	235.9	91.6
1984	238.2	94.9
1985	240.6	98.3
1986	243.2	101.8
1987	246.0	105.4
1988	248.9	109.0
1989	251.8	112.5
1990	254.9	115.8
1991	257.9	118.8
1992	261.0	121.7
1993	264.1	124.5
1994	267.3	127.3
1995	270.6	130.4
1996	274.1	133.7
1997	277.6	137.2
1998	281.1	140.8
1999	284.5	144.5
2000	287.8	148.1
2001	291.0	151.7
2002	294.0	155.2
2003	296.9	158.7
2004	299.8	162.2
2005	302.7	165.8
2006	305.7	169.5
2007	308.7	173.2
2008	311.7	177.0

Source: U.N. Population Division, *World Population Prospects: The 2008 Revision Population Database*, at [esa.un.org/unpp](http://esa.un.org/unpp), updated 11 March 2009.

## Populations of United States and Pakistan, 1950-2008



## Life Expectancy for the World and Selected Groups and Regions, 1950-2005, with Projection to 2050

Period	Africa	Sub-Saharan Africa	Asia	Europe	Latin America & the Caribbean	U.S. & Canada	Oceania	Top 20 Failing States*	World
1950-1955	39	38	41	66	51	69	60	38	47
1955-1960	41	40	44	68	54	70	62	40	50
1960-1965	43	42	48	70	57	71	64	42	52
1965-1970	44	43	54	70	59	71	65	45	56
1970-1975	46	45	57	71	61	72	66	47	58
1975-1980	49	47	59	71	63	74	68	49	60
1980-1985	50	48	61	72	65	75	70	51	62
1985-1990	51	49	63	73	67	76	71	52	63
1990-1995	52	49	64	73	69	77	72	53	64
1995-2000	52	49	66	73	71	78	73	53	65
2000-2005	53	50	68	74	72	79	75	54	66
2005-2010	54	52	69	75	73	80	76	55	68
2010-2015	56	54	70	76	74	81	77	58	69
2015-2020	58	56	72	77	76	81	78	60	70
2020-2025	60	57	73	78	76	82	79	61	71
2025-2030	61	59	74	79	77	82	80	63	72
2030-2035	63	61	74	80	78	83	80	65	73
2035-2040	64	63	75	80	79	83	81	66	74
2040-2045	66	64	76	81	79	84	82	68	75
2045-2050	67	66	77	82	80	84	82	69	76

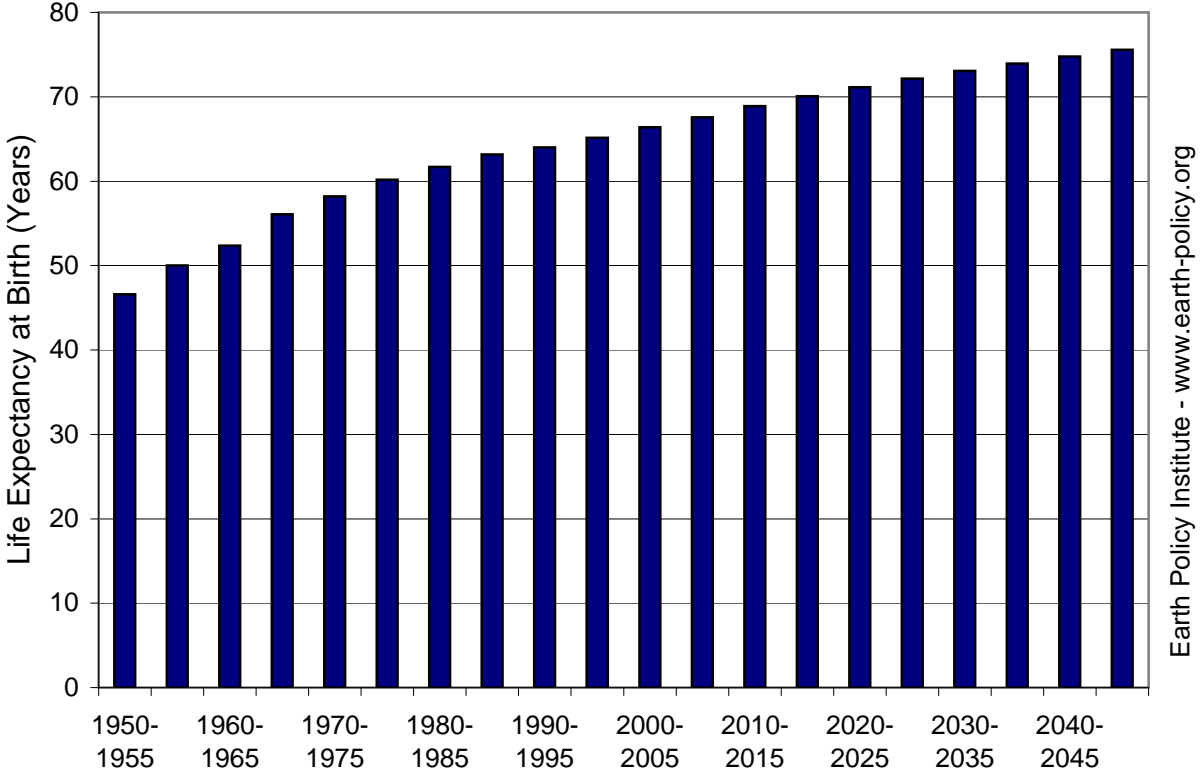
\* Note: The top 20 failing states, based on data from 2009, are Somalia, Chad, Sudan, Zimbabwe, the Democratic Republic of the Congo, Afghanistan, Iraq, the Central African Republic, Guinea, Pakistan, Haiti, Côte d'Ivoire, Kenya, Nigeria, Yemen, Burma, Ethiopia, East Timor, North Korea, and Niger.

Source: Compiled by Earth Policy Institute from U.N. Population Division, *World Population Prospects: The 2008 Revision Population Database*, at [esa.un.org/unpp](http://esa.un.org/unpp), updated 11 March 2009; top 20 failing states from Fund for Peace and *Foreign Policy*, "The Failed States Index," *Foreign Policy*, July/August 2010, pp. 76-79.

This is part of a supporting dataset for Lester R. Brown, **World on the Edge: How to Prevent Environmental and Economic Collapse** (New York: W.W. Norton & Company, 2011). For more information and a free download of the book, see Earth Policy Institute on-line at [www.earth-policy.org](http://www.earth-policy.org).

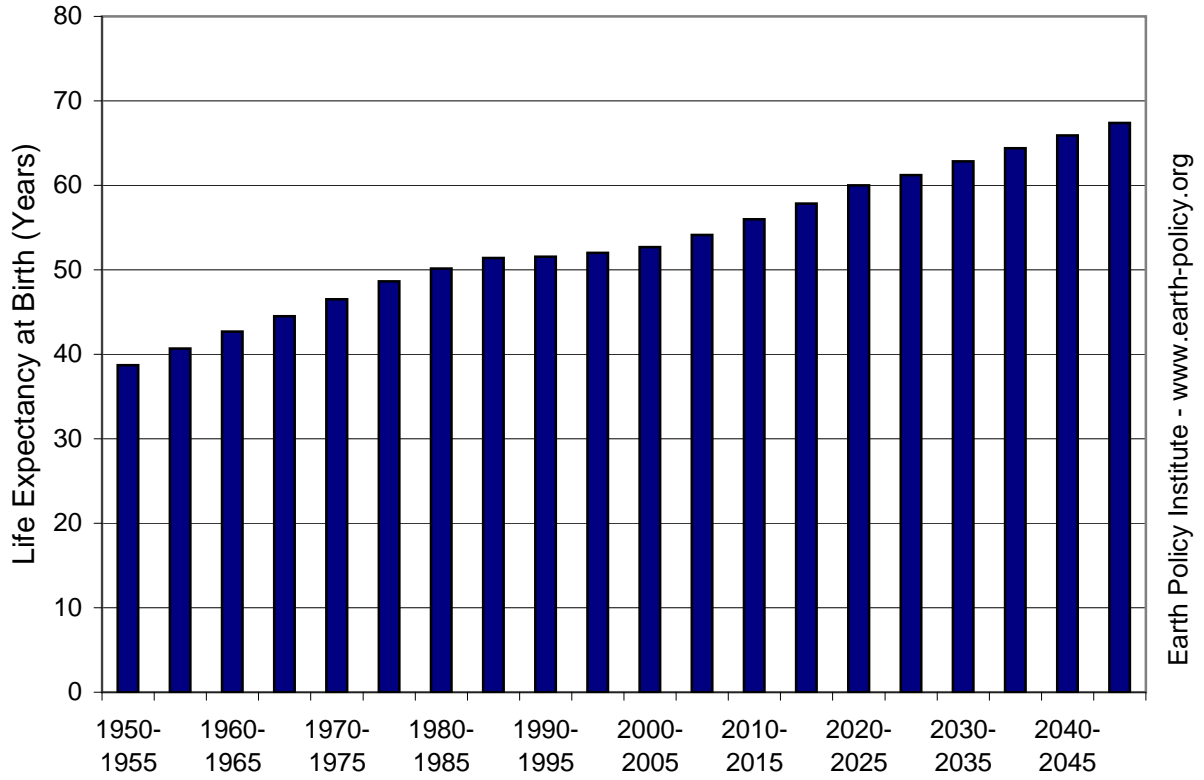


Life Expectancy for the World, 1950-2005,  
with Projection to 2050



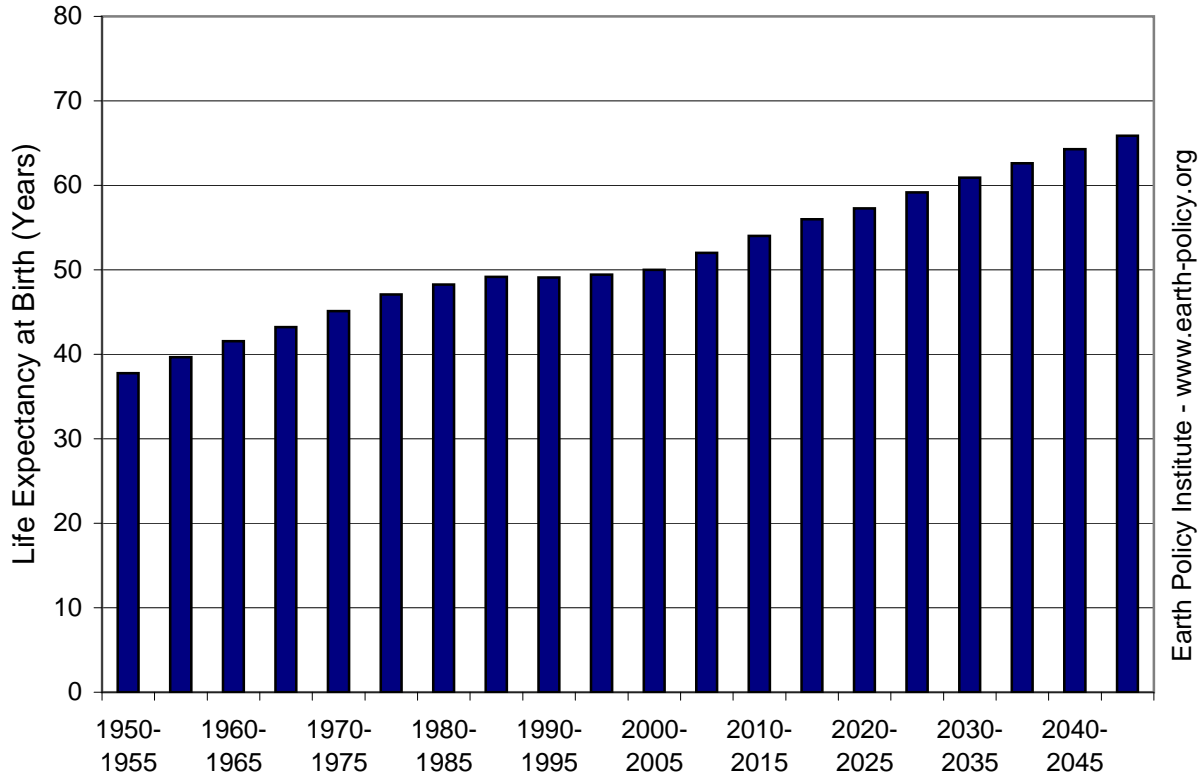
Source: UNPop

### Life Expectancy for Africa, 1950-2005, with Projection to 2050



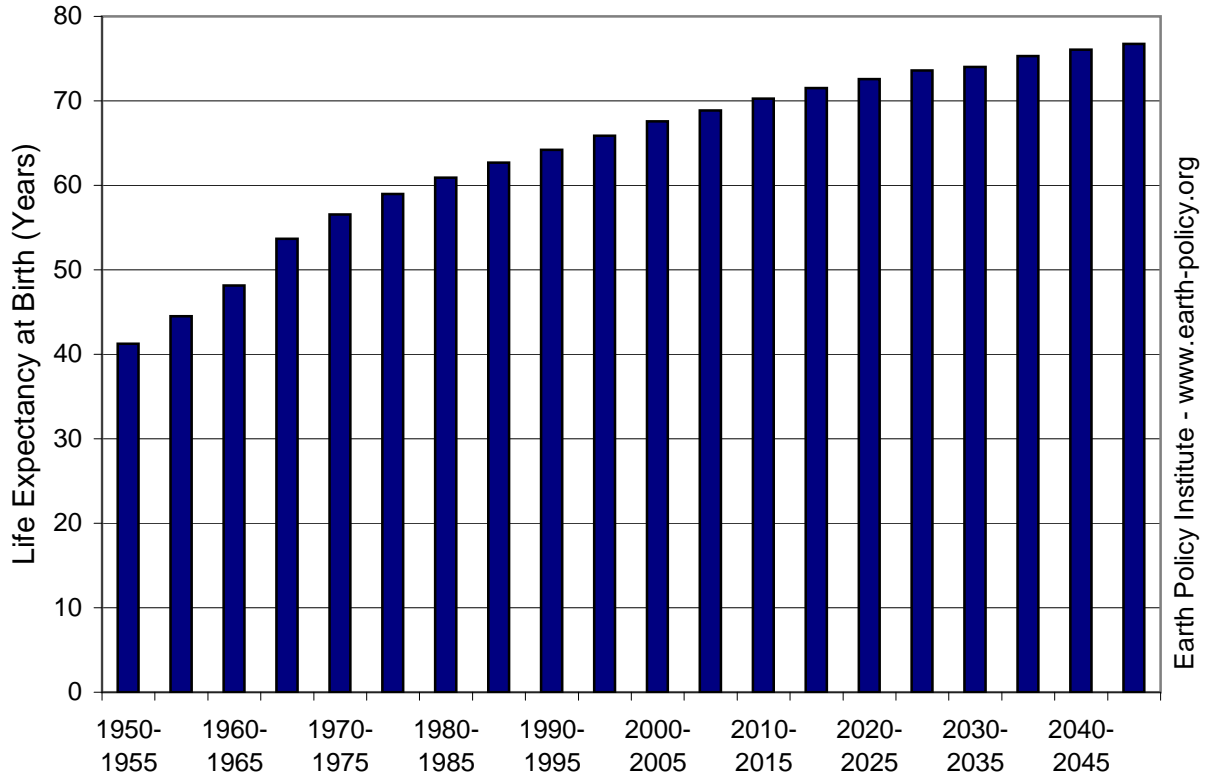
Source: UNPop

# Life Expectancy for Sub-Saharan Africa, 1950-2005, with Projection to 2050



Source: UNPop

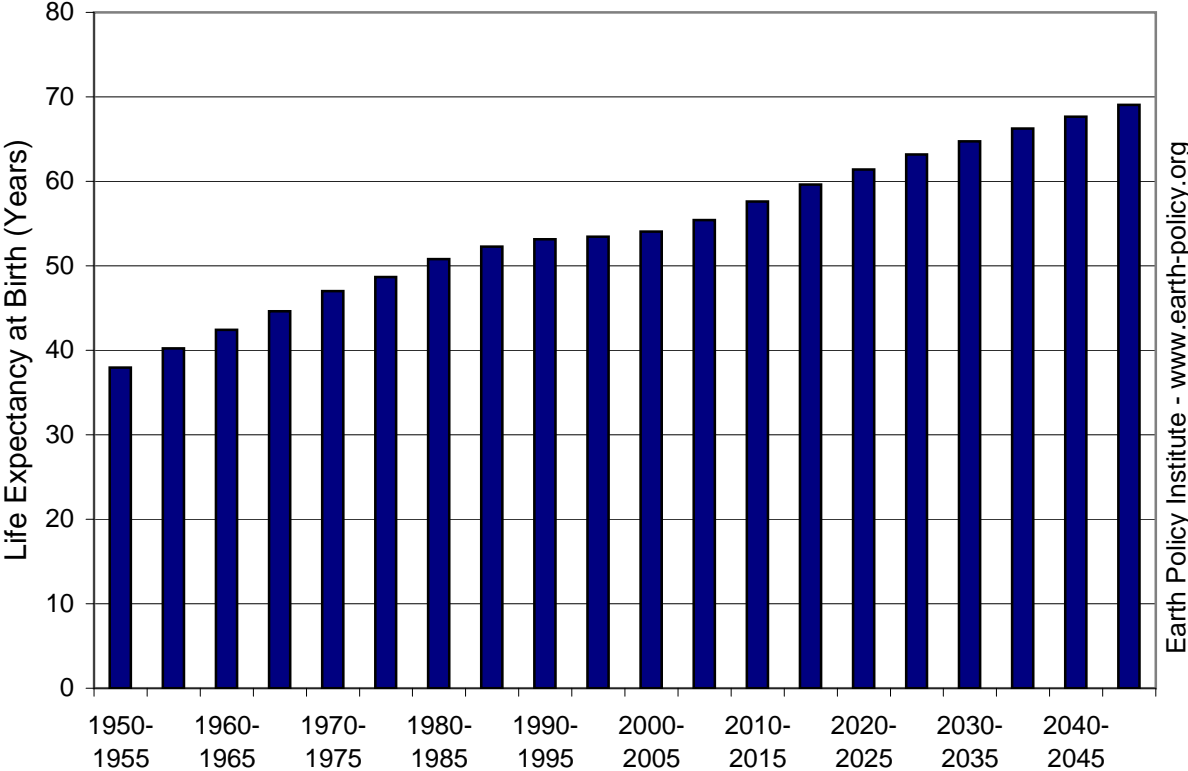
### Life Expectancy for Asia, 1950-2005, with Projection to 2050



Source: UNPop

Earth Policy Institute - [www.earth-policy.org](http://www.earth-policy.org)

Life Expectancy for Top 20 Failing States, 1950-2005,  
with Projection to 2050



Source: UNPop

Earth Policy Institute - [www.earth-policy.org](http://www.earth-policy.org)

**Gross Domestic Product Based on Purchasing Power Parity for China, India, and Brazil, 1980-2009**

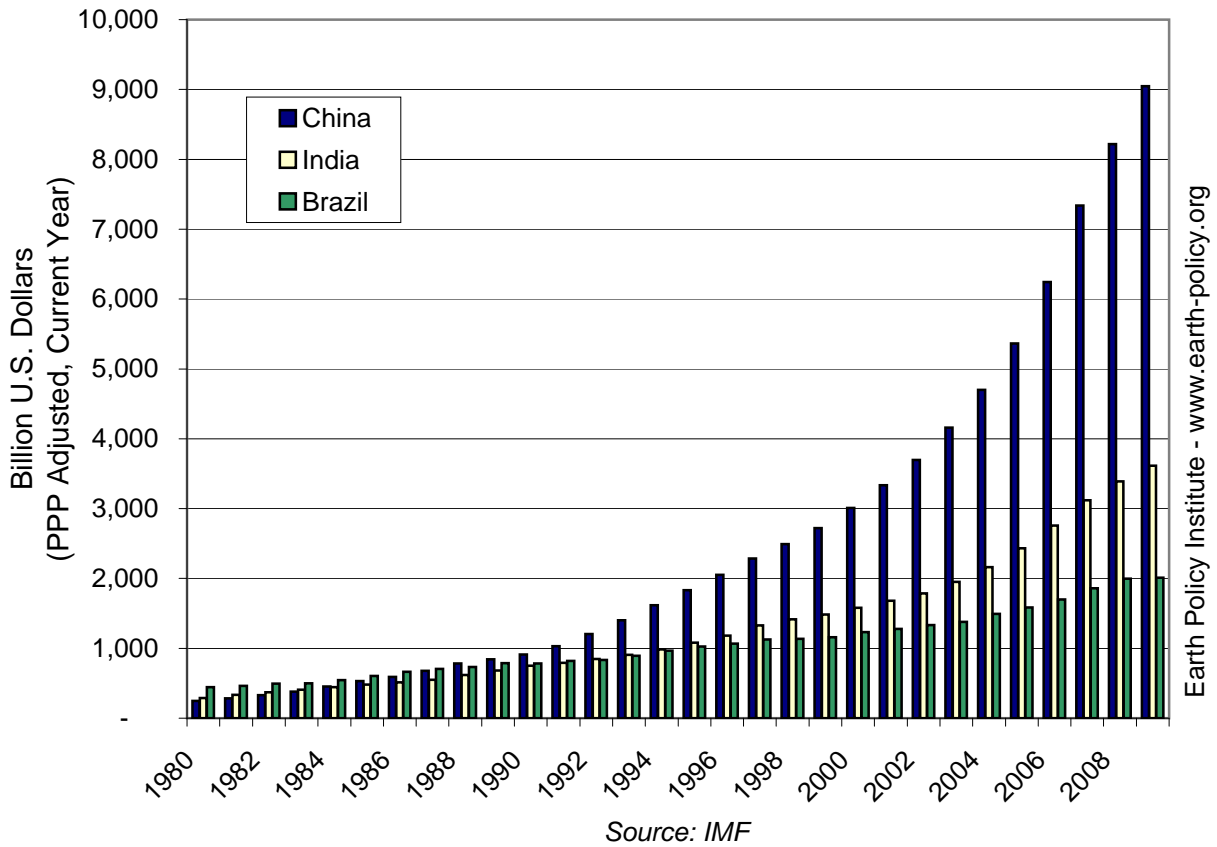
Year	China	India	Brazil
	Billion U.S. Dollars (PPP Adjusted, Current Year)*		
1980	248	288	444
1981	285	335	464
1982	330	369	495
1983	380	408	497
1984	454	443	543
1985	531	479	604
1986	591	514	664
1987	679	551	708
1988	781	617	734
1989	844	683	786
1990	910	750	782
1991	1,029	793	818
1992	1,203	847	833
1993	1,401	909	893
1994	1,618	985	966
1995	1,832	1,080	1,027
1996	2,054	1,184	1,069
1997	2,284	1,329	1,125
1998	2,490	1,415	1,138
1999	2,719	1,483	1,158
2000	3,011	1,582	1,234
2001	3,334	1,681	1,278
2002	3,697	1,786	1,333
2003	4,158	1,949	1,378
2004	4,698	2,162	1,495
2005	5,364	2,434	1,585
2006	6,242	2,756	1,701
2007	7,338	3,118	1,858
2008	8,217	3,390	1,996
2009	9,047	3,615	2,010

\* Note: Purchasing-power-parity (PPP) adjustment attempts to make currency among different countries comparable based on the amount of currency required to purchase the same volume of goods in each country. The IMF expresses PPP-adjusted figures in international dollars, a theoretical currency that corresponds to nominal U.S. dollars.

Source: Compiled by Earth Policy Institute from International Monetary Fund (IMF), *World Economic Outlook 2010*, electronic database, at [www.imf.org/external/pubs/ft/weo/2010/02/weodata/index.aspx](http://www.imf.org/external/pubs/ft/weo/2010/02/weodata/index.aspx), updated October 2010.

This is part of a supporting dataset for Lester R. Brown, **World on the Edge: How to Prevent Environmental and Economic Collapse** (New York: W.W. Norton & Company, 2011). For more information and a free download of the book, see Earth Policy Institute on-line at [www.earth-policy.org](http://www.earth-policy.org).

## Gross Domestic Product Based on Purchasing Power Parity for China, India, and Brazil, 1980-2008



**Per Capita Gross Domestic Product Based on Purchasing Power Parity for China, India, and Brazil, 1980-2009**

Year	China	India	Brazil
	Billion U.S. Dollars (PPP Adjusted, Current Year)*		
1980	251	416	3,741
1981	285	472	3,821
1982	324	510	3,984
1983	369	551	3,910
1984	435	585	4,175
1985	502	619	4,540
1986	550	649	4,887
1987	621	681	5,105
1988	704	746	5,192
1989	749	809	5,457
1990	796	870	5,335
1991	888	901	5,488
1992	1,026	943	5,497
1993	1,182	991	5,802
1994	1,350	1,054	6,173
1995	1,513	1,133	6,466
1996	1,678	1,219	6,629
1997	1,848	1,344	6,869
1998	1,996	1,405	6,846
1999	2,162	1,447	6,861
2000	2,376	1,518	7,204
2001	2,613	1,585	7,354
2002	2,878	1,657	7,560
2003	3,217	1,779	7,698
2004	3,614	1,942	8,231
2005	4,102	2,153	8,603
2006	4,749	2,402	9,166
2007	5,553	2,677	9,900
2008	6,188	2,868	10,526
2009	6,778	3,015	10,499

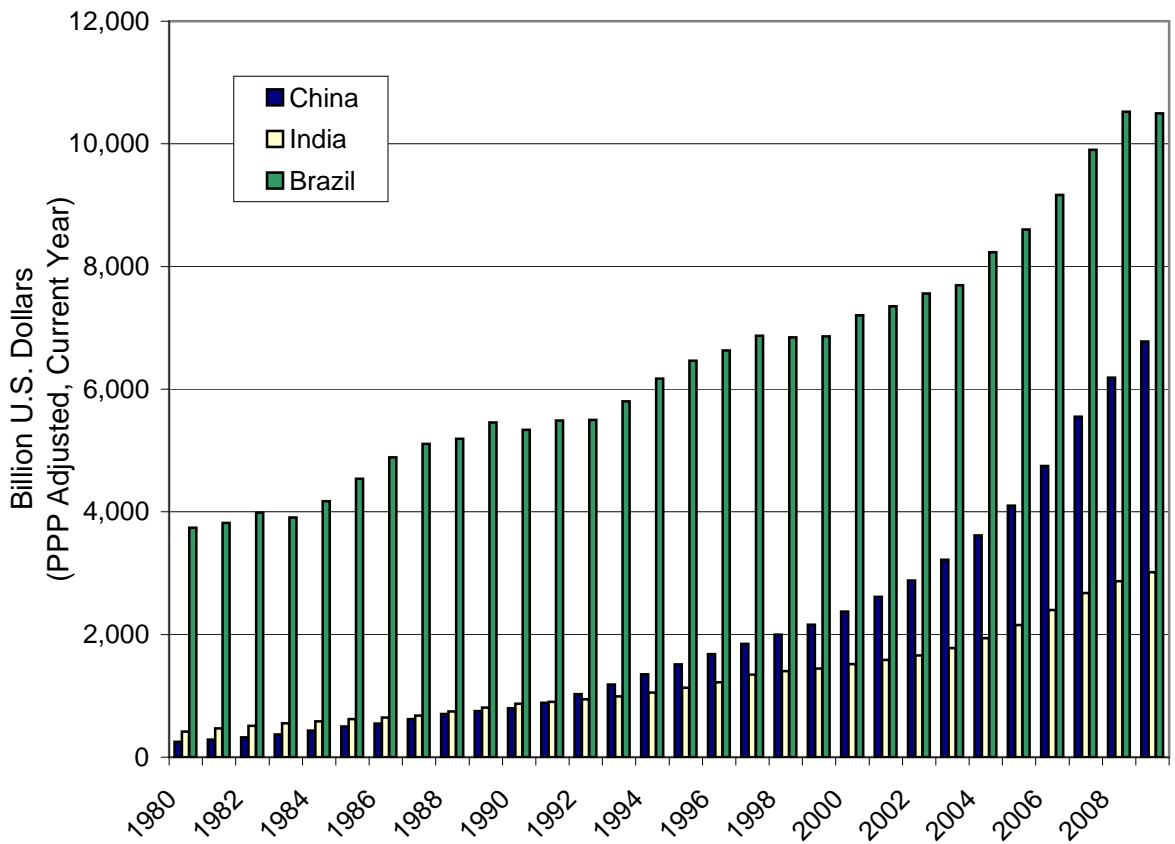
\* Note: Purchasing-power-parity (PPP) adjustment attempts to make currency among different countries comparable based on the amount of currency required to purchase the same volume of goods in each country. The IMF expresses PPP-adjusted figures in international dollars, a theoretical currency that corresponds to nominal U.S. dollars.

Source: Compiled by Earth Policy Institute from International Monetary Fund (IMF), *World Economic Outlook 2010*, electronic database, at [www.imf.org/external/pubs/ft/weo/2010/02/weodata/index.aspx](http://www.imf.org/external/pubs/ft/weo/2010/02/weodata/index.aspx), updated October 2010.

This is part of a supporting dataset for Lester R. Brown, **World on the Edge: How to Prevent Environmental and Economic Collapse** (New York: W.W. Norton & Company, 2011). For more information and a free download of the book, see Earth Policy Institute on-line at [www.earth-policy.org](http://www.earth-policy.org).



## Per Capita Gross Domestic Product Based on Purchasing Power Parity for China, India, and Brazil, 1980-2008



Source: IMF

**Official Development Assistance from Development Assistance Committee Members, 1960-2009**

Year	Total Net ODA	Total ODA Grants	Debt Forgiveness Grants
Billion U.S. Dollars (Current Year)			
1960	4.7	3.7	0.0
1961	5.2	4.0	0.0
1962	5.6	4.0	0.0
1963	5.8	3.9	0.0
1964	5.9	3.8	0.0
1965	6.5	3.7	0.0
1966	6.5	3.7	0.0
1967	6.4	3.6	0.0
1968	6.9	3.3	0.0
1969	6.9	3.2	0.0
1970	6.7	3.3	0.0
1971	7.3	3.6	0.0
1972	8.8	4.4	0.3
1973	8.7	4.5	0.0
1974	11.2	5.3	0.0
1975	13.3	6.3	0.0
1976	13.2	6.6	0.1
1977	15.0	7.2	0.2
1978	19.1	9.4	0.7
1979	21.8	11.7	0.5
1980	26.2	13.0	1.2
1981	24.6	12.2	0.2
1982	27.0	12.5	0.1
1983	26.8	13.3	0.1
1984	28.1	14.8	0.1
1985	28.8	17.0	0.3
1986	35.8	20.0	0.3
1987	40.6	22.2	0.2
1988	47.1	24.7	0.3
1989	45.8	25.8	0.6
1990	54.3	32.3	4.3
1991	58.4	36.6	6.0
1992	62.4	34.8	3.0
1993	56.3	33.5	2.7
1994	59.0	35.2	3.5
1995	58.9	36.3	3.7
1996	55.8	36.6	3.4
1997	48.7	31.4	3.1
1998	52.3	32.5	3.0
1999	53.6	34.0	2.3
2000	54.0	33.1	2.0
2001	52.7	33.6	2.5
2002	58.6	39.9	4.5
2003	69.4	51.0	8.3
2004	79.9	57.5	7.1
2005	107.8	83.8	25.0
2006	104.8	79.7	18.6
2007	104.2	75.7	9.6
2008	122.3	88.2	11.1
2009	119.7	80.7	0.5

Notes:

1) Total Net ODA refers to total grants (transfers of cash, goods, and services not requiring repayment) and loans/credits provided to recipient countries, minus repayments to donor countries of principal on loans.

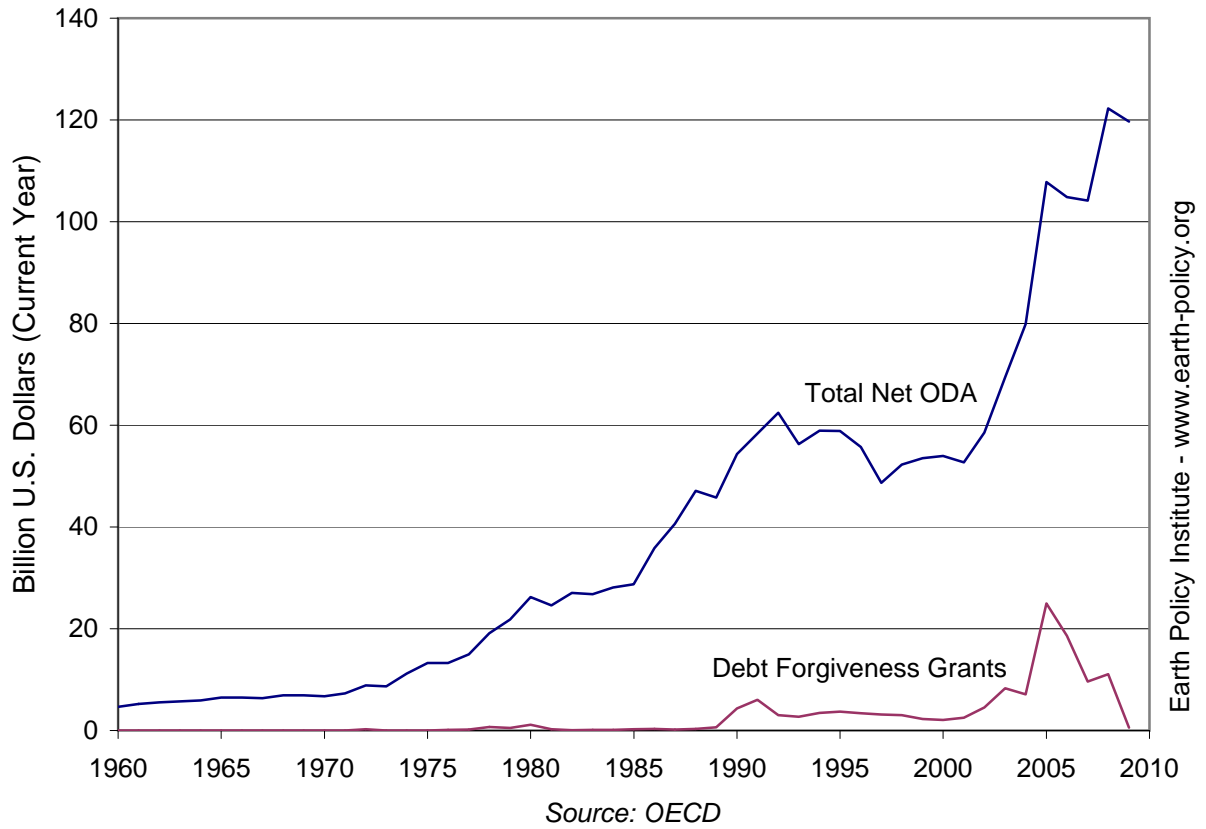
2) The Development Assistance Committee (DAC) is a group of twenty-three major bilateral donors: the EU-15, plus Australia, Canada, Japan, New Zealand, Norway, Switzerland, the United States, and the European Commission.

3) Total Net ODA from DAC countries is equal to 98.7% of total net ODA distributed to recipient countries. Total ODA Grants from DAC countries is equal to 99.4% of total ODA grants distributed to recipient countries. Debt Forgiveness Grants from DAC countries are equal to 99.9% of all debt forgiveness distributed to recipient countries.

Source: Compiled by Earth Policy Institute from Organisation for Economic Cooperation and Development (OECD), *OECD Statistics*, electronic database, at [stats.oecd.org/Index.aspx](http://stats.oecd.org/Index.aspx), updated 4 October 2010; OECD, "DAC's Glossary," at [www.oecd.org/glossary/0,3414,en\\_2649\\_33721\\_1965693\\_1\\_1\\_1\\_1,00.html](http://www.oecd.org/glossary/0,3414,en_2649_33721_1965693_1_1_1_1,00.html).

This is part of a supporting dataset for Lester R. Brown, **World on the Edge: How to Prevent Environmental and Economic Collapse** (New York: W.W. Norton & Company, 2011). For more information and a free download of the book, see Earth Policy Institute online at [www.earth-policy.org](http://www.earth-policy.org).

## Official Development Assistance from Development Assistance Committee Members, 1960-2009



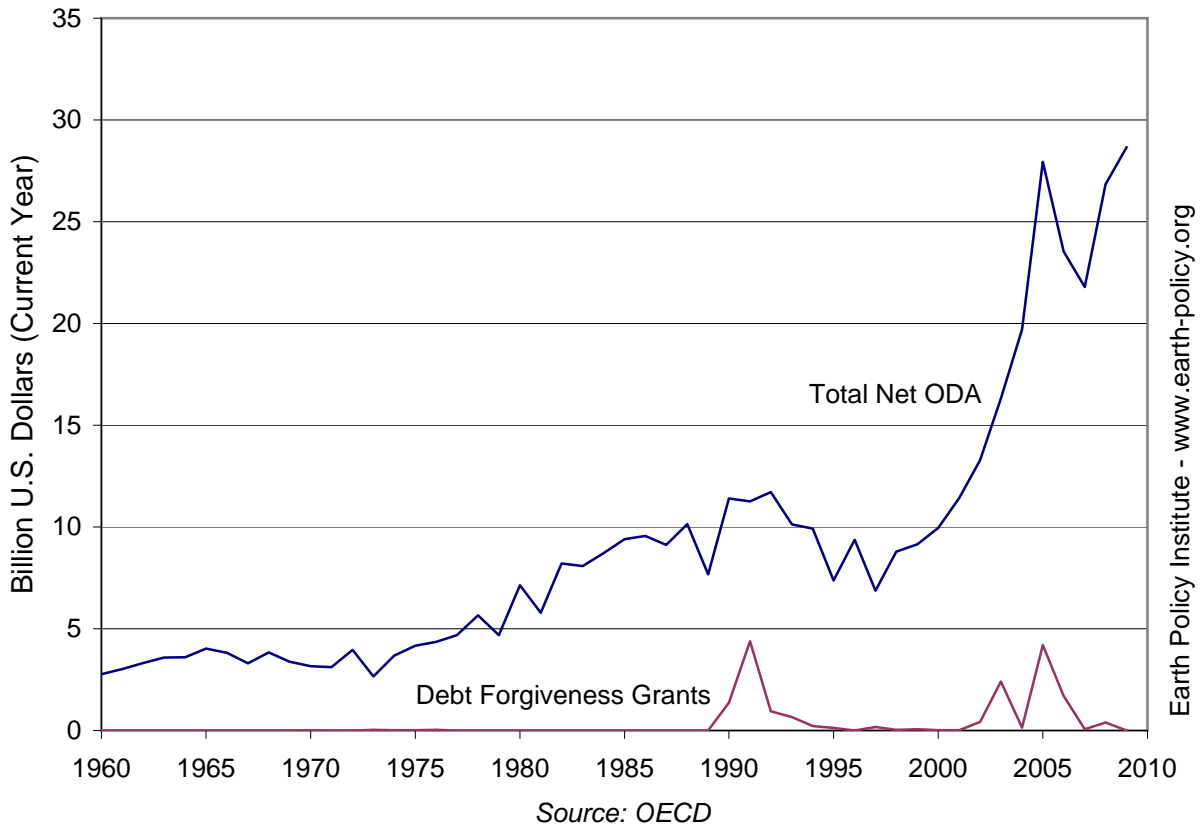
### Official Development Assistance from the United States, 1960-2009

Year	Total Net ODA	Total ODA Grants	Debt Forgiveness Grants
	Billion U.S. Dollars (Current Year)		
1960	2.8	2.5	0.0
1961	3.0	2.6	0.0
1962	3.3	2.6	0.0
1963	3.6	2.6	0.0
1964	3.6	2.4	0.0
1965	4.0	2.2	0.0
1966	3.8	2.2	0.0
1967	3.3	1.9	0.0
1968	3.8	1.7	0.0
1969	3.4	1.5	0.0
1970	3.2	1.4	0.0
1971	3.1	1.5	0.0
1972	4.0	1.6	0.0
1973	2.7	1.4	0.0
1974	3.7	1.7	0.0
1975	4.2	1.7	0.0
1976	4.4	1.7	0.0
1977	4.7	1.7	0.0
1978	5.7	2.1	0.0
1979	4.7	2.5	0.0
1980	7.1	3.0	0.0
1981	5.8	3.2	0.0
1982	8.2	3.8	0.0
1983	8.1	4.5	0.0
1984	8.7	5.6	0.0
1985	9.4	7.3	0.0
1986	9.6	7.0	0.0
1987	9.1	6.8	0.0
1988	10.1	6.5	0.0
1989	7.7	6.8	0.0
1990	11.4	8.5	1.4
1991	11.3	12.1	4.4
1992	11.7	8.7	1.0
1993	10.1	8.5	0.7
1994	9.9	8.3	0.2
1995	7.4	6.4	0.1
1996	9.4	7.7	0.0
1997	6.9	5.6	0.2
1998	8.8	6.6	0.0
1999	9.1	7.6	0.1
2000	10.0	8.1	0.0
2001	11.4	9.0	0.0
2002	13.3	11.3	0.4
2003	16.3	16.4	2.4
2004	19.7	17.0	0.1
2005	27.9	26.3	4.2
2006	23.5	22.0	1.7
2007	21.8	19.7	0.1
2008	26.8	24.8	0.4
2009	28.7	25.9	0.0

Note: Total Net ODA refers to total grants (transfers of cash, goods, and services not requiring repayment) and loans/credits provided to recipient countries, minus repayments to donor countries of principal on loans.

Source: Compiled by Earth Policy Institute from Organisation for Economic Cooperation and Development (OECD), *OECD Statistics*, electronic database, at [stats.oecd.org/Index.aspx](http://stats.oecd.org/Index.aspx), updated 4 October 2010; OECD, "DAC's Glossary," at [www.oecd.org/glossary/0,3414,en\\_2649\\_33721\\_1965693\\_1\\_1\\_1\\_1,00.html](http://www.oecd.org/glossary/0,3414,en_2649_33721_1965693_1_1_1_1,00.html).

# Official Development Assistance from the United States, 1960-2009



## Education and Total Fertility Rates for Top and Bottom Countries Sorted by Primary School Enrollment

Top 10 Countries <sup>1</sup>	Primary School Enrollment <sup>2</sup> (Latest Year)	Adult Literacy Rate <sup>3</sup> (Latest Year)	Total Fertility Rate <sup>4</sup> (2008)
	Percent	Percent	Number of Children per Woman
Japan	100.0	-	1.3
Spain	99.8	97.6	1.5
Iran	99.7	82.3	1.8
Georgia <sup>6</sup>	99.6	99.7	1.6
United Kingdom	99.6	-	1.9
Canada <sup>5</sup>	99.5	-	1.6
Sri Lanka	99.5	90.6	2.3
New Zealand	99.5	-	2.2
Greece <sup>6</sup>	99.4	97.0	1.5
Cuba <sup>6</sup>	99.3	99.8	1.5

Bottom 10 Countries <sup>1</sup>	Primary School Enrollment <sup>2</sup> (Latest Year)	Adult Literacy Rate <sup>3</sup> (Latest Year)	Total Fertility Rate <sup>4</sup> (2008)
	Percent	Percent	Number of Children per Woman
Nigeria <sup>5,6</sup>	61.4	60.1	5.7
Chad <sup>5,6</sup>	61.0	32.7	6.2
Congo	58.9	-	4.4
Côte d'Ivoire <sup>6</sup>	57.2	54.6	4.6
Niger	54.0	28.7	7.1
Equatorial Guinea <sup>6</sup>	53.5	93.0	5.3
Guinea-Bissau <sup>6</sup>	52.1	51.0	5.7
Djibouti	40.1	-	3.9
Sudan <sup>5,6</sup>	39.2	69.3	4.2
Eritrea <sup>6</sup>	35.7	65.3	4.6

### Notes:

<sup>1</sup> Rankings are based on a list of 185 countries for which primary enrollment data are available. Countries for which data are not available include Afghanistan, Burma, China, the Democratic Republic of the Congo, Haiti, North Korea, Russia, Singapore, and Somalia.

<sup>2</sup> Enrollment of the official age group for primary school as a percentage of the corresponding population.

<sup>3</sup> The percentage of population aged 15 years and over who can both read and write with understanding a short simple statement on his/her everyday life.

<sup>4</sup> The average number of children a woman would have at the end of her reproductive period, assuming her reproductive rate is constant throughout the period.

<sup>5</sup> Primary enrollment rates are UIS estimations.

<sup>6</sup> Adult literacy rates are UIS estimations.

Source: Compiled by Earth Policy Institute from UNESCO Institute for Statistics (UIS), *Data Center*, electronic database, at [stats.uis.unesco.org](http://stats.uis.unesco.org), viewed 12 November 2010; UIS, "Glossary," at [www.uis.unesco.org/glossary/index.aspx](http://www.uis.unesco.org/glossary/index.aspx), viewed 12 November 2010; UNESCO, *Education for All Global Monitoring Report 2010: Reaching the Marginalized* (Paris, 2010), statistical tables; United Nations, "Glossary," in *World Population Prospects: The 2008 Revision Population Database*, at [esa.un.org/unpp](http://esa.un.org/unpp), updated 11 March 2009.

This is part of a supporting dataset for Lester R. Brown, **World on the Edge: How to Prevent Environmental and Economic Collapse** (New York: W.W. Norton & Company, 2011). For more information and a free download of the book, see Earth Policy Institute on-line at [www.earth-policy.org](http://www.earth-policy.org).

### Female Education and Total Fertility Rates by Country, Latest Year (2003-2008)

Country	Female Primary Enrollment Percent	Female Secondary Enrollment Percent	Female Adult Literacy Percent	Total Fertility Rate Children Per Woman
Afghanistan	-	14.6	-	6.6
Albania	83.8	-	98.7	1.9
Algeria	92.9	-	63.9	2.4
Andorra	82.9	72.0	-	1.3
Angola	-	-	57.0	5.8
Anguilla	92.8	79.1	-	-
Antigua and Barbuda	86.8	87.2	99.4	-
Argentina	-	83.8	97.7	2.2
Armenia	85.6	88.7	99.4	1.7
Aruba	98.3	79.2	98.0	1.7
Australia	97.4	88.7	-	2.0
Austria	-	-	-	1.4
Azerbaijan	95.3	97.2	99.2	2.3
Bahamas	92.4	87.1	-	2.0
Bahrain	96.5	91.3	89.4	2.3
Bangladesh	86.3	42.6	49.8	2.3
Barbados	-	-	-	1.5
Belarus	95.6	88.9	99.7	1.4
Belgium	98.7	85.1	-	1.8
Belize	97.4	67.9	-	2.9
Benin	86.5	-	28.1	5.4
Bermuda	70.9	56.3	-	1.8
Bhutan	88.5	49.0	38.7	2.6
Bolivia	91.5	69.0	86.0	3.5
Bosnia and Herzegovina	88.3	-	95.9	1.2
Botswana	87.8	60.5	83.5	2.9
Brazil	93.2	85.4	90.2	1.9
British Virgin Islands	94.0	88.7	-	-
Brunei Darussalam	93.4	90.5	93.3	2.1
Bulgaria	95.8	82.3	97.9	1.5
Burkina Faso	59.4	13.1	21.6	5.9
Burma (Myanmar)	-	46.4	89.2	2.3
Burundi	99.6	-	59.9	4.6
Cambodia	86.7	31.7	70.9	2.9
Cameroon	85.6	-	67.8	4.6
Canada	-	-	-	1.6
Cape Verde	81.5	-	79.3	2.7
Cayman Islands	78.3	76.0	99.0	-
Central African Republic	56.6	7.7	41.1	4.8
Chad	-	-	21.9	6.2
Chile	94.5	86.2	98.7	1.9
China	-	-	90.5	1.8
China, Hong Kong SAR	94.7	75.8	-	1.0
China, Macao SAR	86.9	75.8	90.7	0.9
Colombia	89.2	76.7	93.4	2.4
Comoros	83.8	-	67.8	4.0
Congo	56.0	-	-	4.4
Cook Islands	94.6	83.7	-	-
Costa Rica	-	-	96.2	2.0
Côte d'Ivoire	52.0	-	44.3	4.6



Croatia	90.7	89.2	98.0	1.5
Cuba	99.3	83.3	99.8	1.5
Cyprus	98.4	96.7	96.7	1.5
Czech Republic	91.0	-	-	1.5
Dem. Rep. of the Congo	-	-	56.1	6.0
Denmark	95.9	91.7	-	1.9
Djibouti	36.9	17.0	-	3.9
Dominica	94.7	90.7	-	-
Dominican Republic	82.0	65.2	88.3	2.6
Ecuador	98.4	69.6	81.7	2.6
Egypt	91.7	-	57.8	2.9
El Salvador	94.6	57.2	81.4	2.3
Equatorial Guinea	53.0	-	89.1	5.3
Eritrea	33.2	23.1	54.5	4.6
Estonia	94.0	90.7	99.8	1.7
Ethiopia	80.1	19.8	22.8	5.3
Fiji	89.1	82.8	-	2.7
Finland	96.0	96.9	-	1.8
France	98.5	99.4	-	2.0
Gabon	-	-	83.2	3.3
Gambia	71.0	41.4	34.3	5.1
Georgia	97.6	79.2	99.7	1.6
Germany	97.5	-	-	1.4
Ghana	76.2	44.1	59.3	4.0
Gibraltar	-	-	-	-
Greece	99.7	90.6	95.9	1.5
Grenada	92.6	84.6	-	2.3
Guatemala	93.5	38.7	68.7	4.1
Guinea	66.2	21.8	26.4	5.4
Guinea-Bissau	-	-	36.5	5.7
Guyana	94.8	-	-	2.3
Haiti	-	-	-	3.5
Holy See	-	-	-	-
Honduras	97.5	-	83.5	3.3
Hungary	88.9	90.5	98.9	1.4
Iceland	97.7	91.3	-	2.1
India	88.0	-	50.8	2.7
Indonesia	94.4	68.1	88.8	2.2
Iran	-	-	77.2	1.8
Iraq	82.0	38.4	69.2	4.1
Ireland	98.0	90.5	-	2.1
Israel	97.6	87.5	-	3.0
Italy	97.9	95.1	98.5	1.4
Jamaica	78.9	79.1	90.8	2.4
Japan	-	98.4	-	1.3
Jordan	90.2	84.0	88.9	3.5
Kazakhstan	91.6	90.9	99.5	2.6
Kenya	83.0	48.1	82.8	4.9
Kiribati	-	70.7	-	3.4
Kuwait	86.6	80.2	93.1	2.2
Kyrgyzstan	83.3	79.6	99.1	2.7
Laos	80.7	33.5	63.2	3.5
Latvia	-	-	99.8	1.5
Lebanon	89.3	79.0	86.0	1.8
Lesotho	74.3	30.9	95.1	3.3
Liberia	-	-	53.0	5.9
Libya	-	-	81.3	2.7

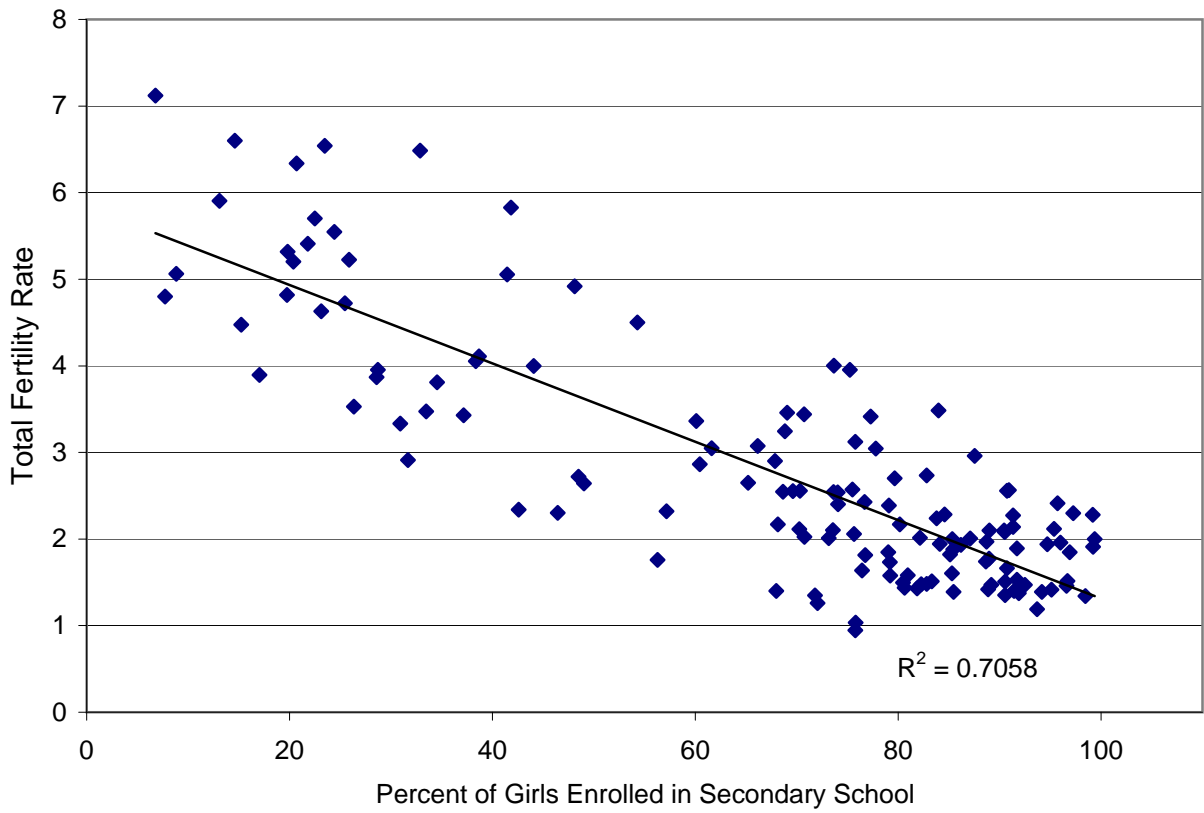
Liechtenstein	91.8	68.0	-	1.4
Lithuania	91.1	92.5	99.7	1.5
Luxembourg	96.5	85.3	-	1.6
Macedonia	86.4	80.6	95.4	1.4
Madagascar	98.9	25.5	65.3	4.7
Malawi	93.2	24.4	65.8	5.5
Malaysia	96.0	70.3	89.8	2.6
Maldives	95.1	70.8	98.4	2.0
Mali	66.4	23.5	18.2	6.5
Malta	92.3	81.9	93.5	1.4
Marshall Islands	79.7	54.3	-	4.5
Mauritania	78.8	15.2	49.5	4.5
Mauritius	94.6	80.9	84.8	1.6
Mexico	98.1	73.6	91.5	2.1
Micronesia	-	-	-	3.6
Moldova	86.8	80.5	97.8	1.5
Monaco	-	-	-	-
Mongolia	90.0	85.3	97.8	2.0
Montenegro	-	-	-	1.6
Montserrat	96.1	96.2	-	-
Morocco	88.1	-	44.1	2.4
Mozambique	80.1	8.8	40.1	5.1
Namibia	91.1	60.1	87.7	3.4
Nauru	-	-	-	-
Nepal	-	-	45.4	2.9
Netherlands	98.4	89.0	-	1.8
Netherlands Antilles	-	-	96.3	2.0
New Zealand	99.7	-	-	2.2
Nicaragua	92.0	48.5	77.9	2.7
Niger	47.6	6.8	15.1	7.1
Nigeria	58.3	22.5	48.8	5.7
Niue	-	-	-	-
North Korea	-	-	100.0	1.9
Norway	98.8	96.0	-	2.0
Oman	69.2	77.8	80.9	3.0
Pakistan	60.2	28.7	40.0	4.0
Palau	-	-	-	-
Palestinian Territory	75.0	87.2	90.9	-
Panama	97.8	68.7	92.8	2.5
Papua New Guinea	-	-	55.6	4.1
Paraguay	87.3	61.6	93.5	3.0
Peru	94.6	75.5	84.6	2.6
Philippines	92.7	66.1	93.9	3.1
Poland	95.4	94.2	99.3	1.4
Portugal	98.4	91.9	92.9	1.4
Puerto Rico	-	-	90.4	1.8
Qatar	93.1	95.7	90.4	2.4
Romania	90.1	71.8	96.9	1.4
Russia	-	-	99.4	1.5
Rwanda	97.0	-	66.1	5.4
Samoa	92.6	75.2	98.5	4.0
San Marino	93.0	-	-	1.5
Sao Tome and Principe	99.5	34.6	83.3	3.8
Saudi Arabia	85.0	75.8	80.2	3.1
Senegal	74.4	19.7	33.0	4.8
Serbia	93.7	91.4	96.2	1.4
Seychelles	95.4	99.2	92.3	2.3
Sierra Leone	-	20.4	28.9	5.2

Singapore	-	-	91.6	1.3
Slovakia	-	-	-	1.3
Slovenia	96.7	91.7	99.7	1.5
Solomon Islands	80.0	28.6	-	3.9
Somalia	-	-	-	6.4
South Africa	87.6	74.0	88.1	2.5
South Korea	97.9	93.7	-	1.2
Spain	99.7	96.6	96.9	1.5
Sri Lanka	99.8	-	89.1	2.3
St. Kitts and Nevis	91.8	91.8	-	-
St. Lucia	90.1	82.1	-	2.0
St. Vincent and the Grenadines	92.3	95.4	-	2.1
Sudan	-	-	59.6	4.2
Suriname	89.6	74.1	88.4	2.4
Swaziland	83.7	26.3	85.6	3.5
Sweden	94.2	99.2	-	1.9
Switzerland	94.1	82.8	-	1.5
Syria	-	68.8	77.2	3.2
Tajikistan	95.4	77.3	99.5	3.4
Tanzania	97.0	-	66.3	5.6
Thailand	89.4	76.7	91.5	1.8
Timor-Leste	80.6	32.9	-	6.5
Togo	89.0	-	53.7	4.3
Tokelau	-	-	-	-
Tonga	95.5	73.7	99.1	4.0
Trinidad and Tobago	91.5	76.4	98.2	1.6
Tunisia	98.1	75.6	71.0	2.1
Turkey	93.6	70.3	81.3	2.1
Turkmenistan	-	-	99.3	2.5
Turks and Caicos Islands	80.7	68.7	-	-
Tuvalu	-	-	-	-
Uganda	99.3	20.7	66.8	6.3
Ukraine	89.1	85.5	99.6	1.4
United Arab Emirates	88.8	84.1	91.5	1.9
United Kingdom	99.7	94.7	-	1.9
United States	92.6	89.0	-	2.1
Uruguay	98.4	73.1	98.5	2.0
Uzbekistan	86.1	90.7	98.9	2.6
Vanuatu	96.3	-	79.5	4.0
Venezuela	90.2	73.6	94.9	2.5
Viet Nam	-	-	90.2	2.1
Yemen	65.7	25.9	42.8	5.2
Zambia	91.8	41.8	61.0	5.8
Zimbabwe	90.5	37.2	88.8	3.4

Source: Compiled by Earth Policy Institute from UNESCO Institute for Statistics, *Data Center*, electronic database, at [stats.uis.unesco.org](http://stats.uis.unesco.org), viewed 18 November 2010.

This is part of a supporting dataset for Lester R. Brown, **World on the Edge: How to Prevent Environmental and Economic Collapse** (New York: W.W. Norton & Company, 2011). For more information and a free download of the book, see Earth Policy Institute on-line at [www.earth-policy.org](http://www.earth-policy.org).

## Female Secondary Education and Total Fertility Rates



Source: EPI from UIS

## Plan B Budget: Additional Annual Funding Needed to Reach Basic Social Goals

Goal	Funding
	Billion U.S. Dollars
Universal primary education	10
Eradication of adult illiteracy	4
School lunch programs	3
Aid to women, infants, and preschool children	4
Reproductive health and family planning	21
Universal basic health care	33
<b>Total</b>	<b>75</b>

Source: Compiled by Earth Policy Institute, with universal primary education from U.N. Educational, Scientific, and Cultural Organization (UNESCO), *Education for All Global Monitoring Report 2010: Reaching the Marginalized* (Paris: 2010), pp. 119-131 and from Annababette Wils et al., "Estimating the Costs of Achieving Education for All in Low-Income Countries," paper commissioned for the EFA Global Monitoring Report 2010, (December 2009); adult literacy program cost is author's estimate based on U.N. Commission on Population and Development, Thirty-sixth Session, Population, Education, and Development, press releases (New York: 31 March–4 April 2003); school lunch program from U.N. World Food Programme, "Two Minutes to Learn About: School Meals," fact sheet (Rome: May 2010); aid to women, infants, and preschool children is author's estimate, based on George McGovern, "Yes We CAN Feed the World's Hungry," *Parade*, 16 December 2001; universal reproductive health and family planning calculated by Earth Policy Institute, based on United Nations Population Fund (UNFPA), *Flow of Financial Resources for Assisting in the Implementation of the Programme of Action of the International Conference on Population and Development*, report for the U.N. Economic and Social Council Commission on Population and Development (New York: 21 January 2009), and on J. Joseph Speidel, University of California, San Francisco Bixby Center for Global Reproductive Health, discussion with and email to Brigid Fitzgerald Reading, Earth Policy Institute, 8 October 2010, with cost of closing the condom gap estimated from Population Action International, "Why Condoms Count in the Era of HIV/AIDS," fact sheet (Washington, DC: 2008), and from United Nations Population Fund (UNFPA), *Donor Support for Contraceptives and Condoms for STI/HIV Prevention 2007* (New York: 2008); universal basic health care from Jeffrey D. Sachs and the Commission on Macroeconomics and Health, *Macroeconomics and Health: Investing in Health for Economic Development* (Geneva: World Health Organization, 2001).

This is part of a supporting dataset for Lester R. Brown, **World on the Edge: How to Prevent Environmental and Economic Collapse** (New York: W.W. Norton & Company, 2011). For more information and a free download of the book, see Earth Policy Institute on-line at [www.earth-policy.org](http://www.earth-policy.org).